

MILLS ESTATE No.20

MILLBRAE

SAN MATEO COUNTY, CALIFORNIA

C. T. BLAIR - CIVIL ENGINEER

SCALE: 1" = 100' MAY, 1959

OWNER'S CERTIFICATE

We hereby certify that we are the owners of, or have some right, title or interest in and to the real property included within the subdivision shown upon this map; and that we are the only persons whose consent is necessary to pass a clear title to said property, and we consent to the making of said map and subdivision as shown within the blue border lines; and we hereby dedicate to public use all Drives, Roads, Streets and Ways as shown on said map within said subdivision.

We also hereby dedicate for public use all easements for public utilities under, on or over those certain parcels of land designated as "P.U.E." on said map within said subdivision; such parcels of land to be kept open and free from buildings and structures of any kind.

AS OWNERS

ATLANTIC LIFE INSURANCE COMPANY
A Virginia corporation

C. A. Heister Vice President
H. Ernest Owen Asst. Treasurer

AS TRUSTEES

TITLE INSURANCE AND TRUST COMPANY, a Corporation, successor by merger to the CALIFORNIA PACIFIC TITLE INSURANCE COMPANY, a Corporation as Trustee

Fred Gaurdin Assistant Secretary
Hazel Terrell Vice President

DEED REFERENCE NOTE

This map is a subdivision of a portion of the lands quit-claimed by Calview Realty Company, a California corporation, to Atlantic Life Insurance Company, a Virginia corporation, by deed recorded June 24, 1953 in Volume 2436 of Official Records of San Mateo County, California, at page 129 (89870-K).

BASIS OF BEARINGS NOTE

The bearing of the center-line of the State Highway, District IV, Route 55, Section A, known as "Skyline Boulevard", between Engineer's Stations "D" 520 + 85.20 P.T. and "A" 563 + 35 ± (bearing S 40° 15' E) was taken as the basis of bearings shown upon this map.

All distances and dimensions are shown in feet and decimals thereof. The blue border indicates the boundaries of the land subdivided by this map.

- ⊙ Indicates Iron Pipe Monument to be set.
- ⊙ Indicates Existing Iron Pipe Monument.

STATE OF CALIFORNIA } s.s. COUNTY OF SAN MATEO:

On this 22nd day of July, 1959, before me, *Willie Kurste*, a Notary Public in and for the County of San Mateo, State of California, residing therein, duly commissioned and sworn, personally appeared *Paul L. Johnson*, known to me to be the Vice President and *Fred Gaurdin*, known to me to be the Assistant Secretary of the TITLE INSURANCE AND TRUST COMPANY, a corporation, the corporation that executed the within instrument, and known to me to be the persons who executed the same upon behalf of the corporation named therein, and acknowledged to me that such corporation executed the same.

IN WITNESS WHEREOF, I have hereunto set my hand and affixed my official seal, the day and year in this certificate first above written.

My Commission Expires: 11-10-59

Willie Kurste
Notary Public in and for the County of San Mateo, State of California.

ENGINEER'S CERTIFICATE

I, C.T. Blair, a Registered Civil Engineer of the State of California, hereby certify that this map correctly represents a survey made under my direction during portions of the months of Sept. '55, April '57, April '58, November and December '58, that the survey is true and complete as shown; and that the monuments are of the character and occupy the positions indicated (or will be set in such positions, and are (or will be) sufficient to enable the survey to be retraced.

Dated: June 10, 1959

C. T. Blair
C. T. Blair, Registered
Civil Engineer - Reg. No. 8724

CITY ENGINEER'S CERTIFICATE

I, Lee E. Ham, City Engineer of the City of Millbrae, State of California, hereby certify that I have examined this map; that the subdivision as shown hereon is substantially the same as it appeared on the tentative map and any approved alterations thereof, as approved by the MILLBRAE PLANNING COMMISSION on March 9, 1959; that all the provisions of the California "Subdivision Map Act" as amended, have been complied with; and that I am satisfied that this map is technically correct.

Dated May 11, 1959

Lee E. Ham
Lee E. Ham - City Engineer - Millbrae

CITY CLERK'S CERTIFICATE

I, Isobel Smart, City Clerk of the City of Millbrae, State of California, hereby certify that the City Council of said City, at its regular meeting held on the 19th day of May, 1959, duly approved the within map and accepted on behalf of the public all parcels of land offered for dedication for public use in conformity with the terms of the offer of dedication.

Dated: July 16, 1959

Isobel Smart
City Clerk - Millbrae

COUNTY RECORDER'S CERTIFICATE

Filed for record at the request of CALIFORNIA PACIFIC TITLE INSURANCE COMPANY this 21 day of JULY, 1959, at 22 minutes past 8 A. M. in Volume 51 of Maps at pages 48-49-50, Records of San Mateo County, California.

FILE No. 71914.B

Ruth Kurste
County Recorder
By: *Eleanor Basteaux*
Chief Deputy

VOL 51

VOL 51

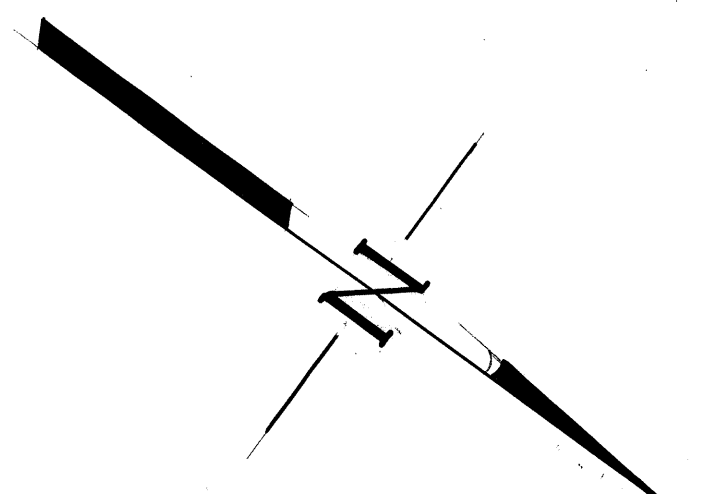
MILLS ESTATE No.20

MILLBRAE

SAN MATEO COUNTY, CALIFORNIA

C.T. BLAIR — CIVIL ENGINEER

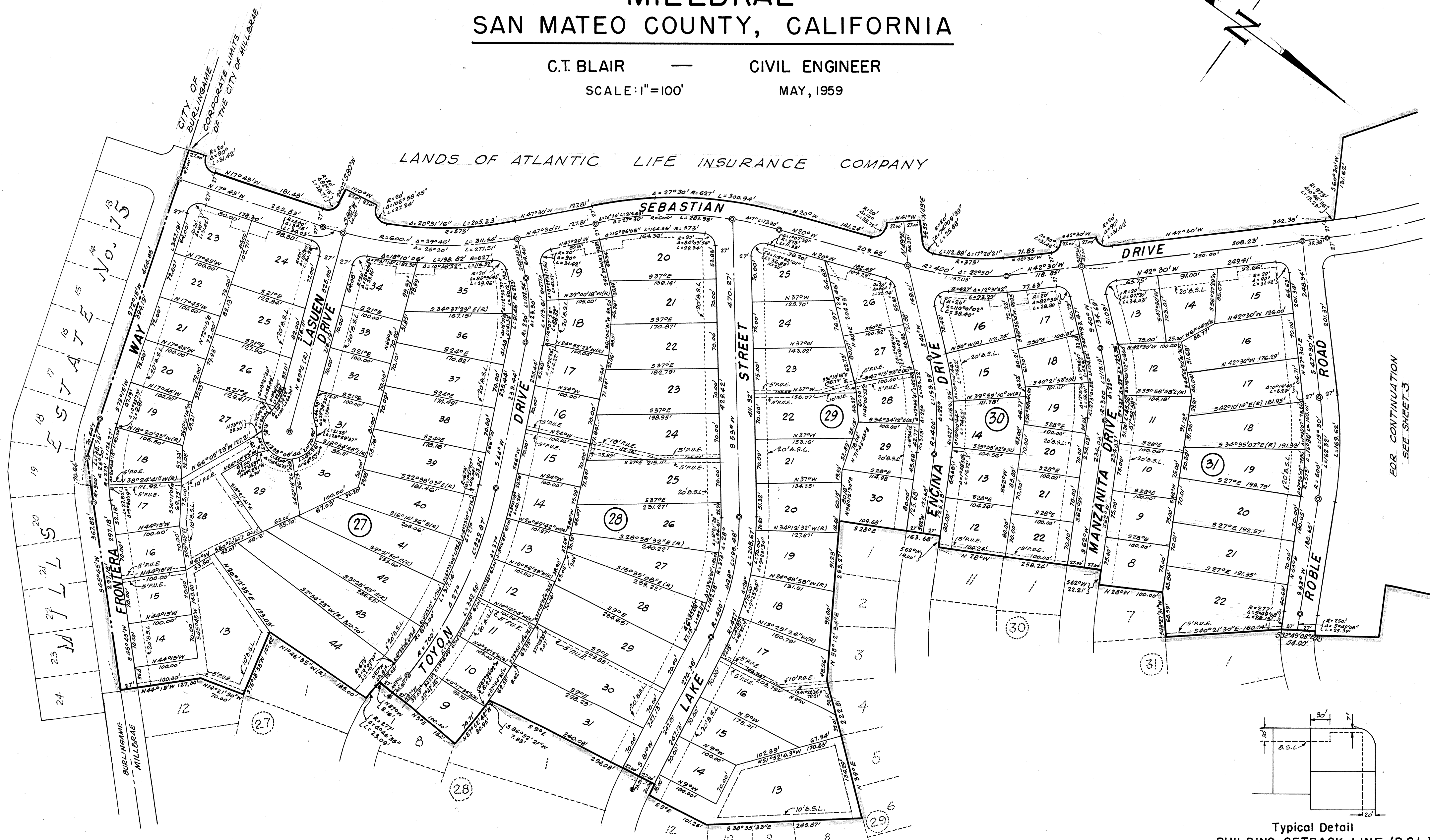
SCALE: 1"=100' MAY, 1959



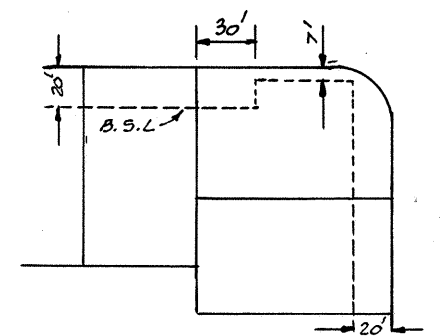
LANDS OF ATLANTIC LIFE INSURANCE COMPANY

VOL 51

VOL 51



FOR CONTINUATION
SEE SHEET 3



Typical Detail
BUILDING SETBACK LINE (B.S.L.)

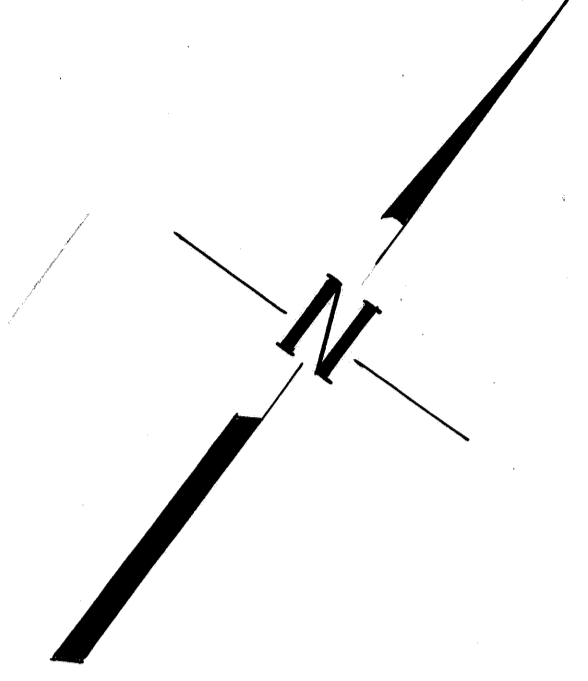
MILLS ESTATE No. 18

MILLS ESTATE No.20

MILLBRAE

SAN MATEO COUNTY, CALIFORNIA

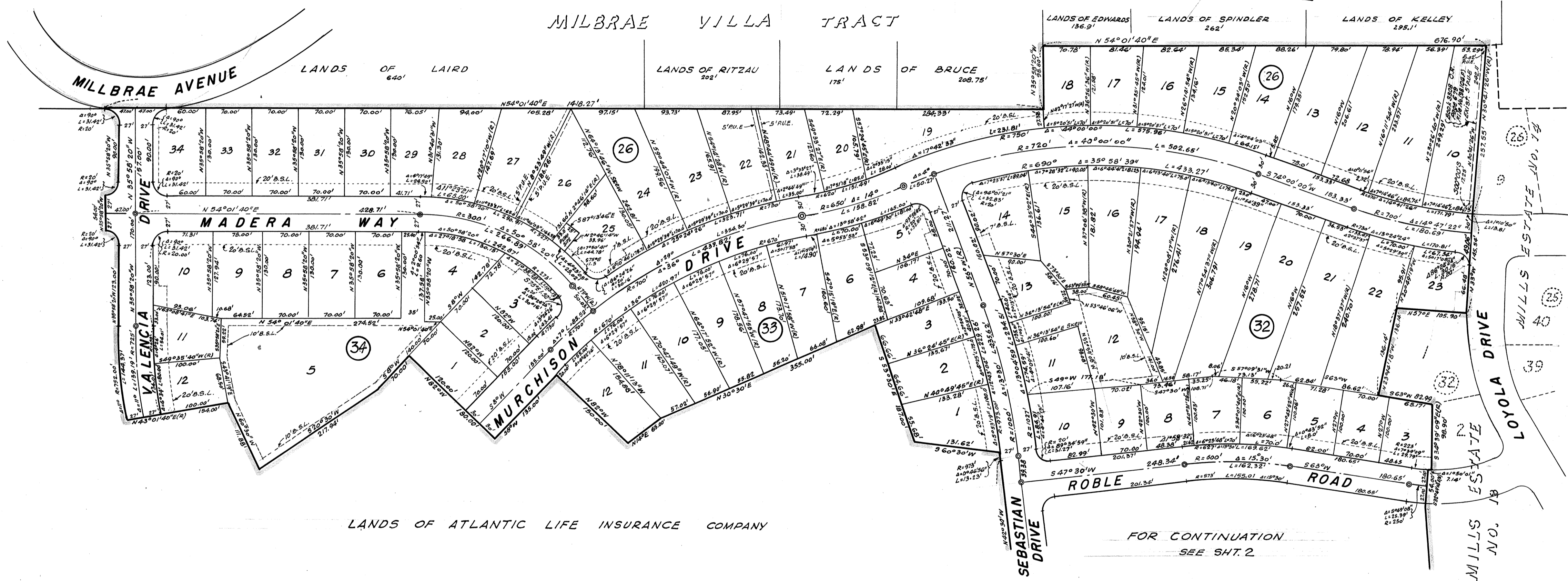
C.T. BLAIR — CIVIL ENGINEER
SCALE: 1"=100' MAY, 1959



VOL 51

VOL 51

MILBRAE VILLA TRACT



LANDS OF ATLANTIC LIFE INSURANCE COMPANY

FOR CONTINUATION
SEE SH. 2