

# MILLBRAE MEADOWS NO 5.

MILLBRAE  
SAN MATEO COUNTY CALIFORNIA.

C. T. BLAIR — CIVIL ENGINEER  
SCALE: 1" = 60' FEBRUARY, 1962

### OWNER'S CERTIFICATE

We hereby certify that we are the owners of, or have some right, title or interest in and to the real property included within the subdivision as shown upon this map; and that we are the only persons whose consent is necessary to pass a clear title to said property, and we consent to the making of said map and subdivision as shown within the blue border lines, and hereby dedicate to public use all streets and pedestrian walkways as shown on said map within said subdivision.

We also hereby dedicate to public use easements for public utilities designated as "P.U.E.", anchor easements designated as "A.E.", such easements to be kept free and clear of buildings and structures of any kind

By owners  
THE STONESON DEVELOPMENT CORPORATION  
a California corporation

*Arthur Schumacher*  
Vice President

*George Detweiler*  
Secretary

### ACKNOWLEDGEMENT STATE OF CALIFORNIA COUNTY OF SAN MATEO

On this 5<sup>th</sup> day of March, 1962, before me Herbert R. Hall, a notary public in and for said County of San Mateo, State of California, residing therein, duly commissioned and sworn, personally appeared Arthur Schumacher, and George Detweiler, known to me to be the Vice-President and Secretary respectively of STONESON DEVELOPMENT CORPORATION, a corporation, and the corporation which executed the within and foregoing instrument, and also known to me to be the persons who executed it on behalf of the corporation therein named and they acknowledged to me that said corporation executed the same.

In WITNESS WHEREOF, I have hereunto set my hand and affixed my official seal the day and year in this certificate first above written.

My Commission Expires May 17, 1964  
Herbert R. Hall  
Notary Public in and for the  
County of San Mateo, State of California

### DEED REFERENCE NOTE

This map is a subdivision of a portion of the lands conveyed by the HIGHLAND BUILDERS, INC., to THE STONESON DEVELOPMENT CORPORATION by deed dated April 10, 1953, and recorded in Volume 2401, at page 463, Official Records of San Mateo county, Calif.

### BASIS OF BEARINGS NOTE

The centerline of Ridgewood Drive which bears (N23°45'W 241.50'), as shown on that certain map entitled "MILLBRAE MEADOWS NO. 1, MILLBRAE, SAN MATEO COUNTY, CALIFORNIA", which map was filed for record on March 2, 1955, in Volume 41 of Maps of pages 21, 22, 23, and 24, Records of San Mateo County, California, was taken as the basis of bearing for this map.

All distances and dimensions shown in feet and decimals thereof.

- o Indicates iron pipe monument on property corner.
- e Indicates monument in hand hole.

The blue border indicates the boundaries of the land subdivided by this map.

### ENGINEER'S CERTIFICATE

I, Charles T. Blair, a Registered Civil Engineer of the State of California, hereby certify that this map correctly represents a survey made under my direction during the month of October, 1961; that the survey is true and complete as shown; that the monuments are of the character and occupy the positions indicated, or will be set in such positions, and are sufficient to enable the survey to be retraced.

Dated: FEB 28, 1962

*Charles T. Blair*  
Registered Civil Engineer  
of the State of California.  
Reg No. 8724.

### CITY ENGINEER'S CERTIFICATE

I, Lee E. Ham, City Engineer of the City of Millbrae, State of California, hereby certify that I have examined this map; that the Subdivision as shown hereon is substantially the same as it appeared on the tentative map and any approved alterations thereof as approved by the "MILLBRAE PLANNING COMMISSION" on September 11, 1961; that all provisions of the California "Subdivision Map Act" as amended, have been complied with; and that I am satisfied that this map is technically correct.

Dated: February 28, 1962

*Lee E. Ham*  
Lee E. Ham - City Engineer  
City of Millbrae, State of California

### CITY CLERK'S CERTIFICATE

I, Isobel Smart, City Clerk of the City of Millbrae, State of California, hereby certify that the City Council of said City, at its regular meeting held on the 19 day of Sept., 1962 duly approved the within map, and accepted on behalf of the public, all parcels of land offered for dedication for public use in conformity with the terms of the offer of dedication.

Dated: Sept 24, 1962

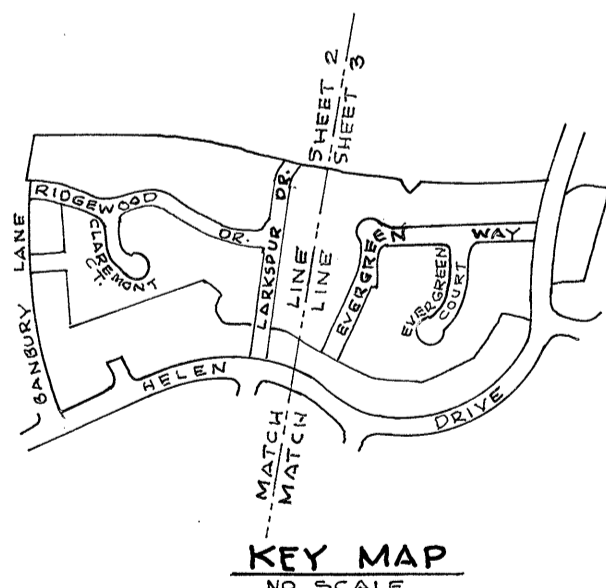
*Isobel Smart*  
City Clerk of the City of Millbrae,  
State of California.

### COUNTY RECORDER.

FILE No. 16327V  
Accepted for record and recorded at the request of  
Title Insurance and Trust Company in book 56  
of Maps at Pages 41143 in the office of the county recorder of the County of San Mateo, State of California, this 25<sup>th</sup> day of Sept. 1962, at 56 minutes past 3 P.M.

*Ruth Kirste*  
Ruth Kirste - County Recorder  
San Mateo County  
State of California.

*Eleanor Barteaux*  
Eleanor Barteaux  
Asst. County Recorder



VOL  
56

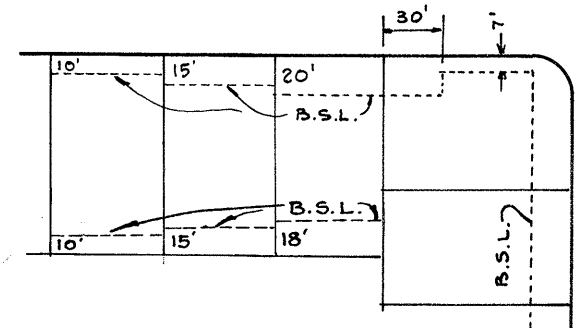
VOL  
56

# MILLBRAE MEADOWS NO 5.

MILLBRAE  
SAN MATEO COUNTY CALIFORNIA.

C.T. BLAIR - CIVIL ENGINEER  
SCALE: 1" = 60'  
OCTOBER, 1961

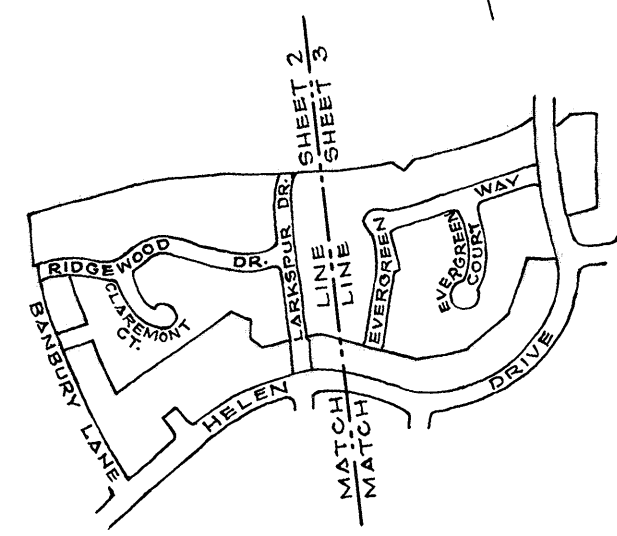
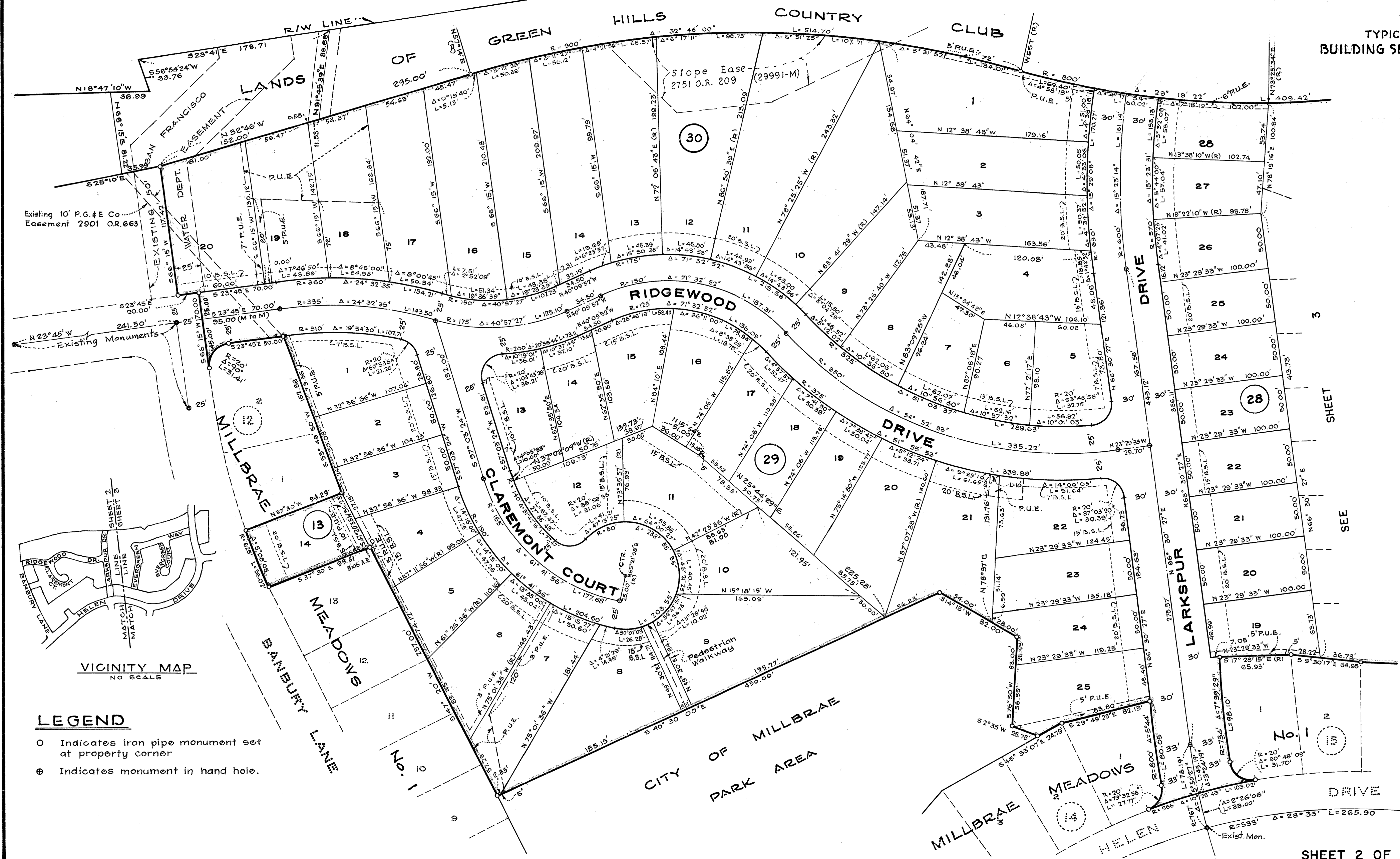
JUNIPERO SERRA BLVD. EXTENSION  
RIGHT OF WAY



TYPICAL DETAIL  
BUILDING SETBACK LINE (B.S.L.)

VOL  
56

VOL  
56



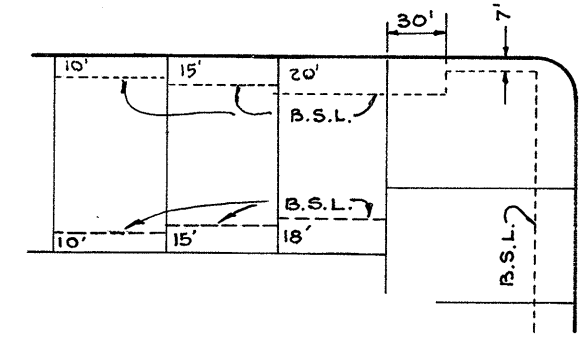
VICINITY MAP  
NO SCALE

### LEGEND

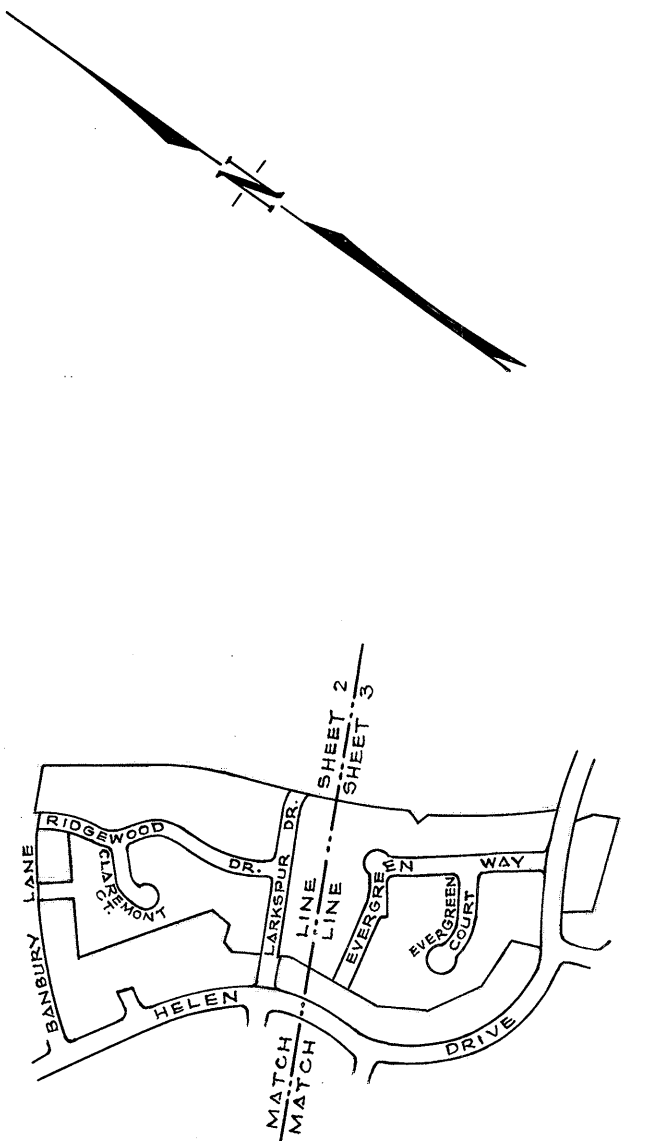
- Indicates iron pipe monument set at property corner
- ⊕ Indicates monument in hand hole.

# MILLBRAE MEADOWS NO 5.

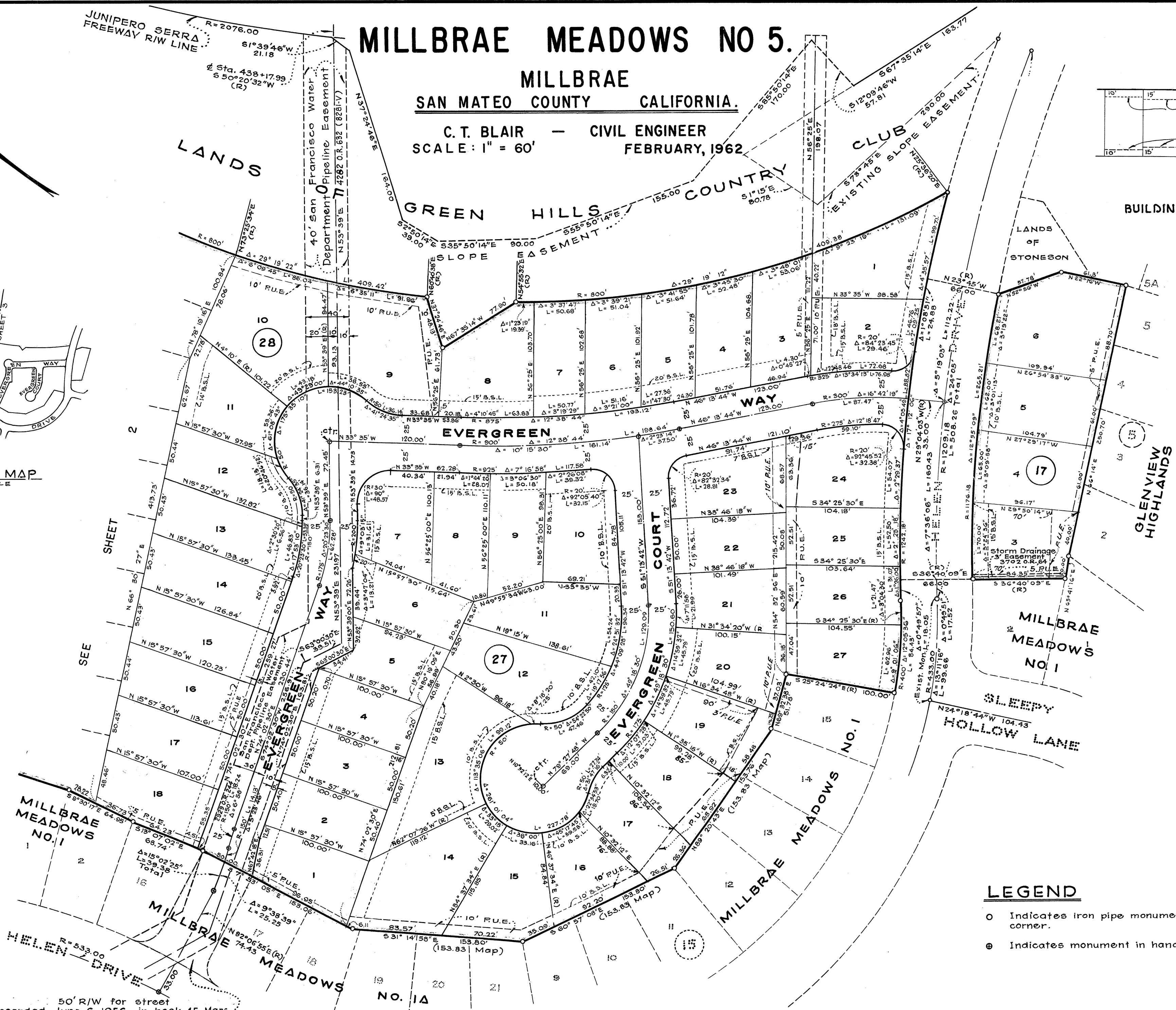
SAN MATEO COUNTY CALIFORNIA.  
C. T. BLAIR - CIVIL ENGINEER  
SCALE: 1" = 60'  
FEBRUARY, 1962



TYPICAL DETAIL  
BUILDING SETBACK LINE (B.S.L.)



VICINITY MAP  
NO SCALE



### LEGEND

- Indicates iron pipe monument set at property corner.
- ⊙ Indicates monument in hand hole.

50' R/W for street  
Recorded June 6, 1956, in book 45, Maps,  
page 24. File No. 59752N